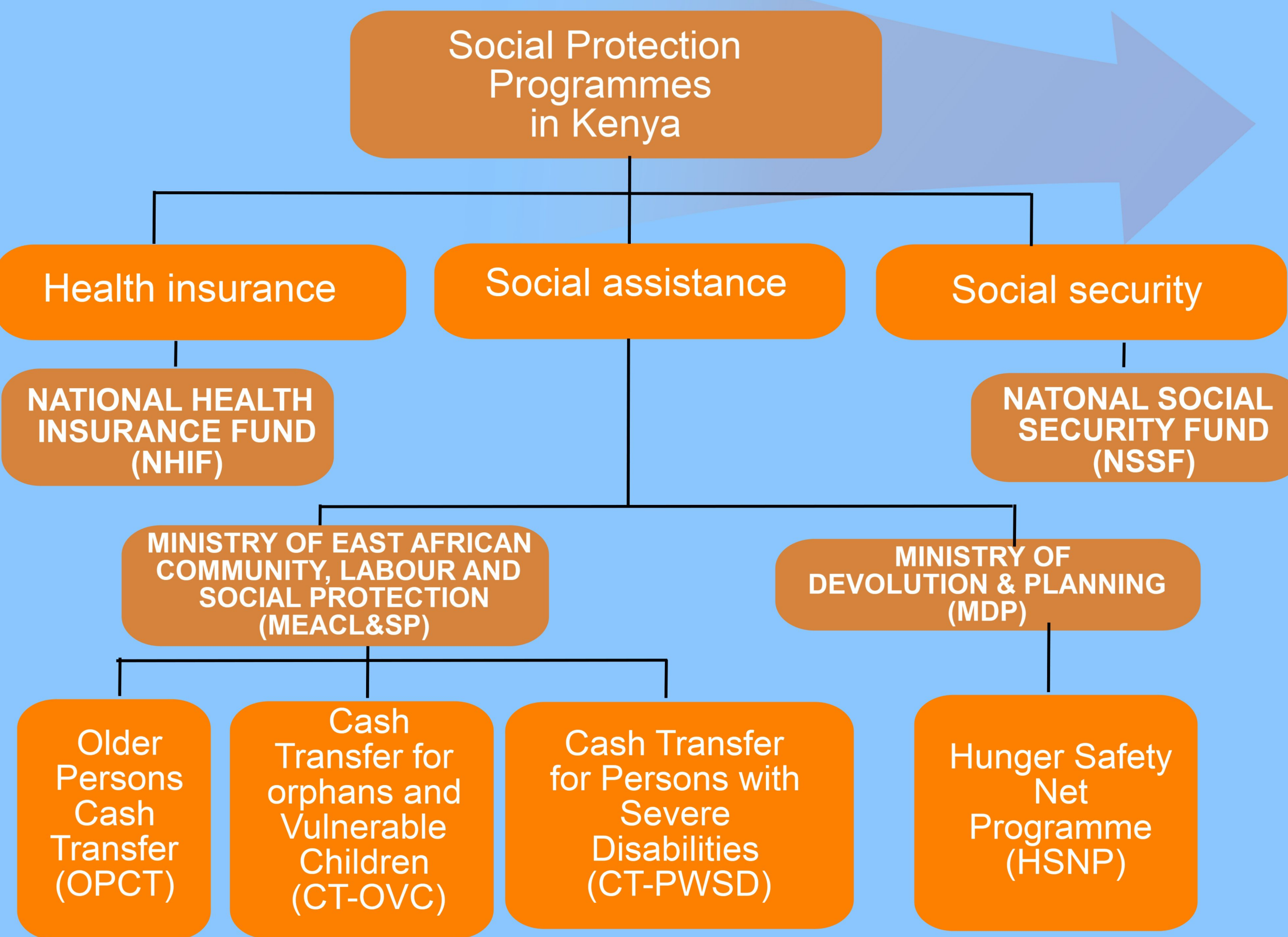
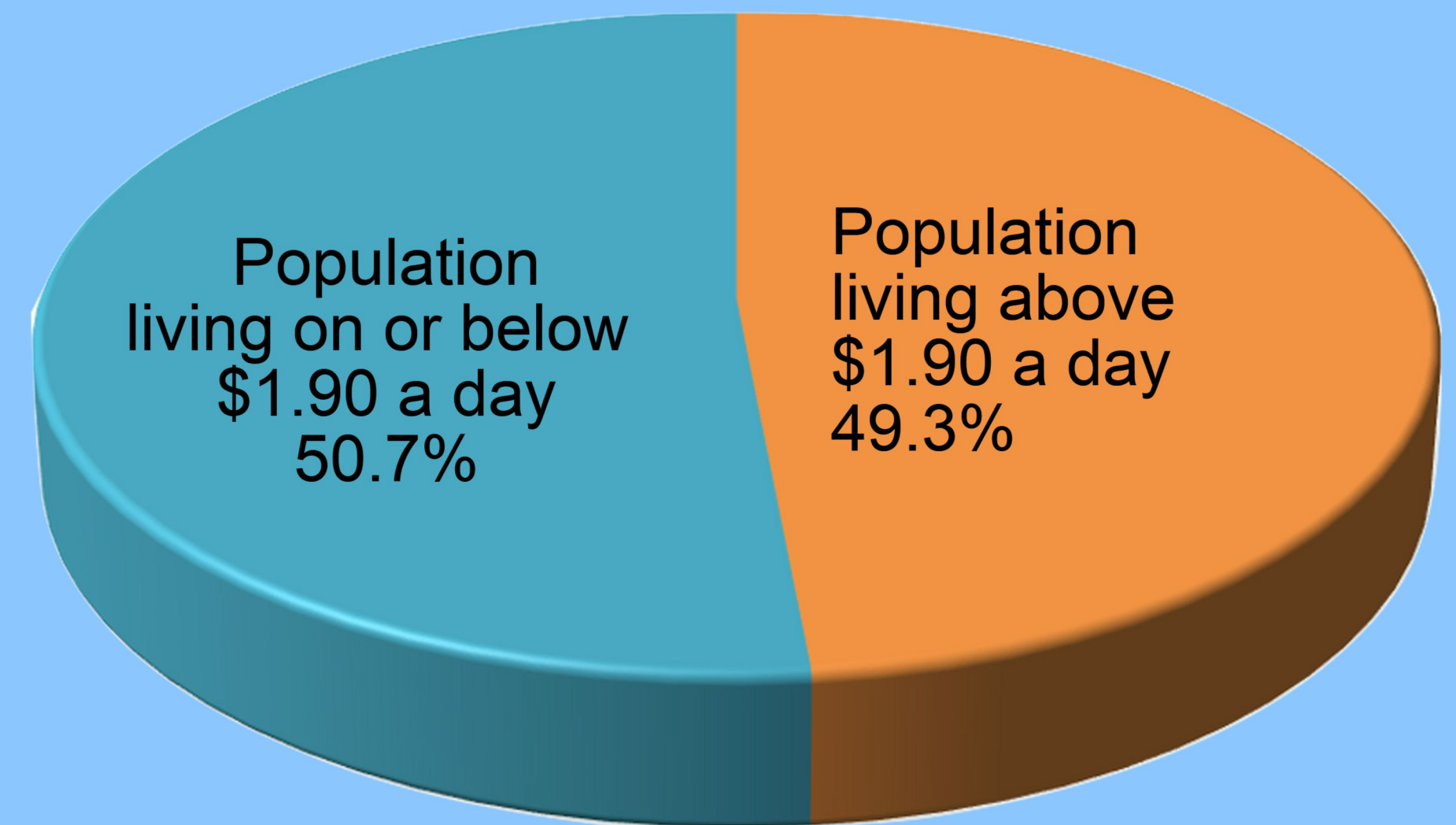
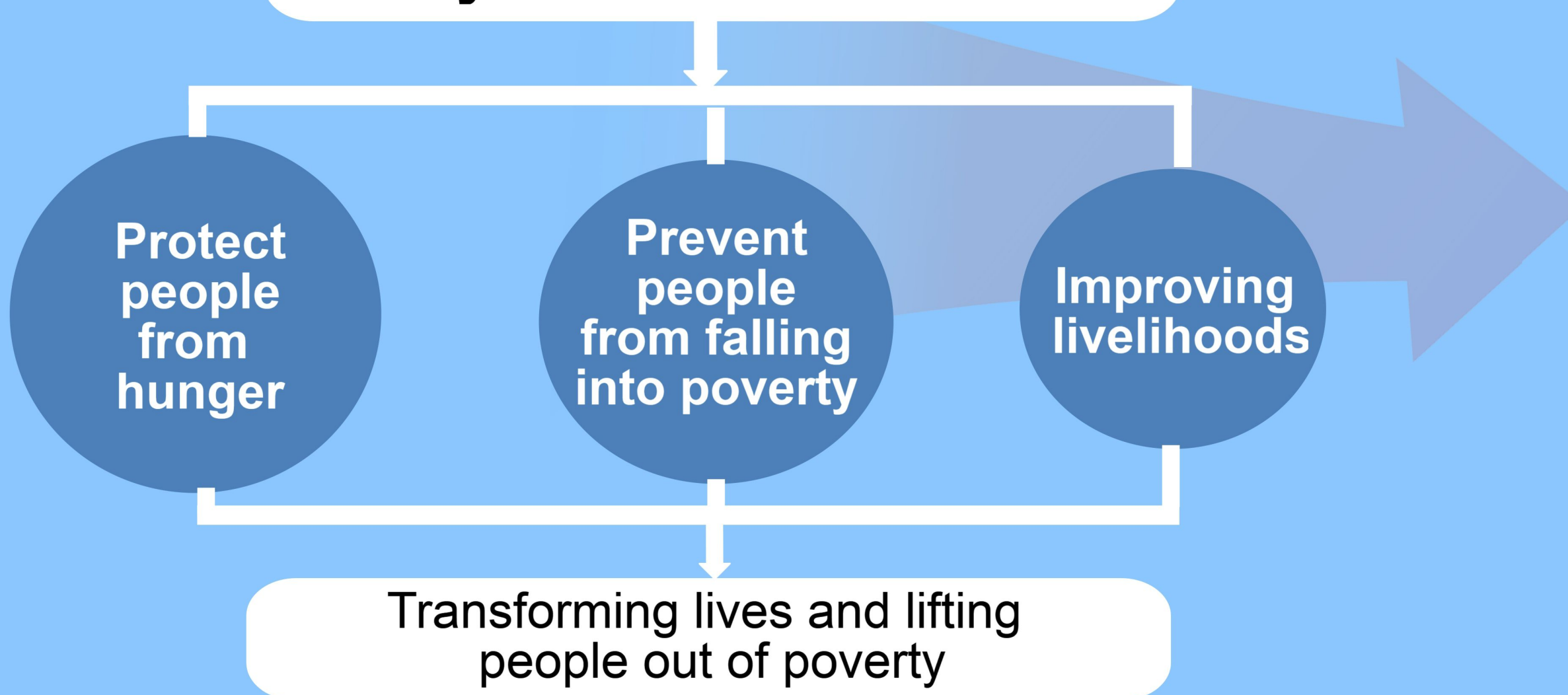


Utafiti Sera (Research-Policy Community) on Social Protection in Kenya

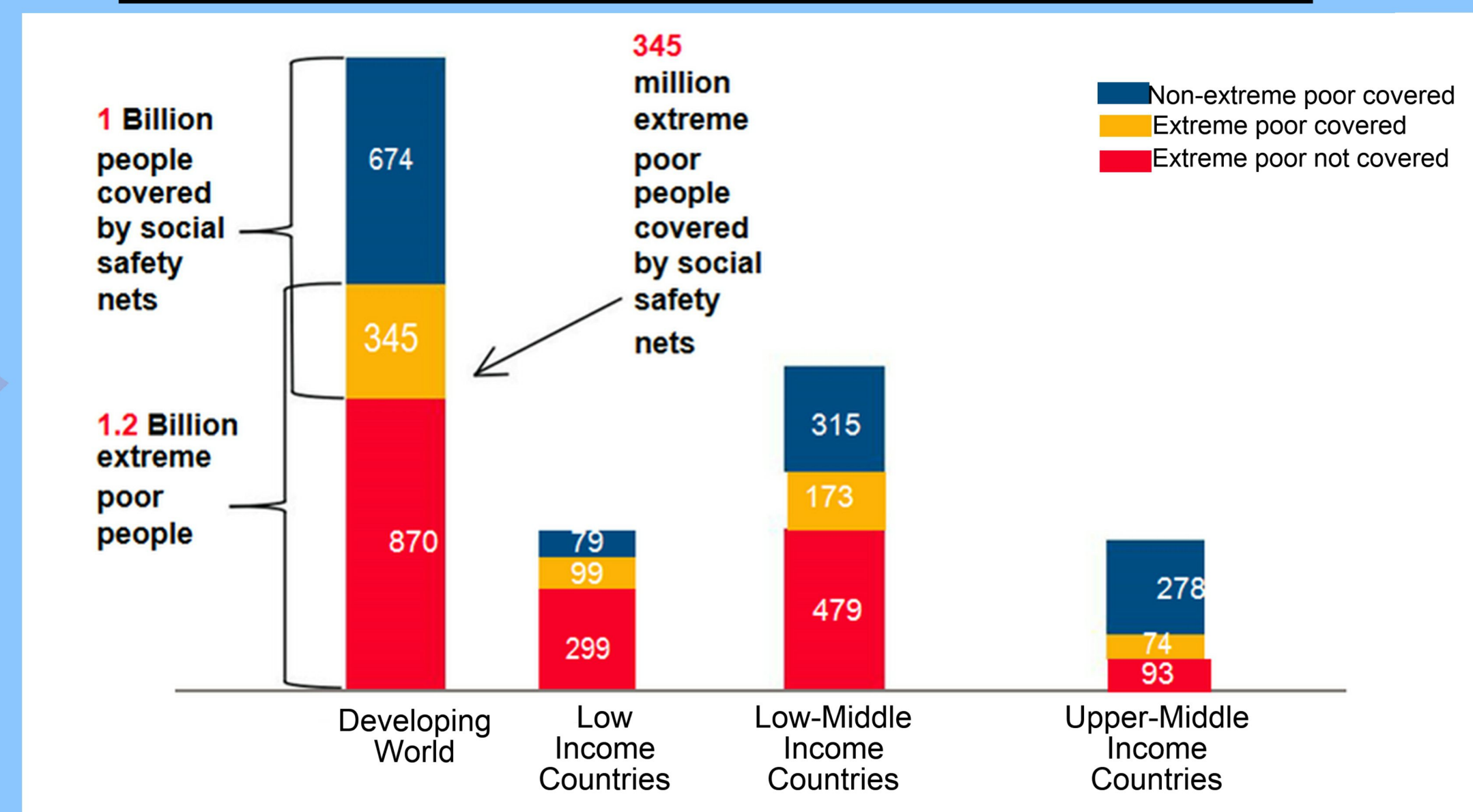
In 2013, 389 million (50.7%) people in Africa lived on \$1.90 a day or less (World Bank, 2016).
 Around 40% of Kenya's population of 48.6 million live on \$1.90 a day or less (World Bank, 2016).



Why Social Protection

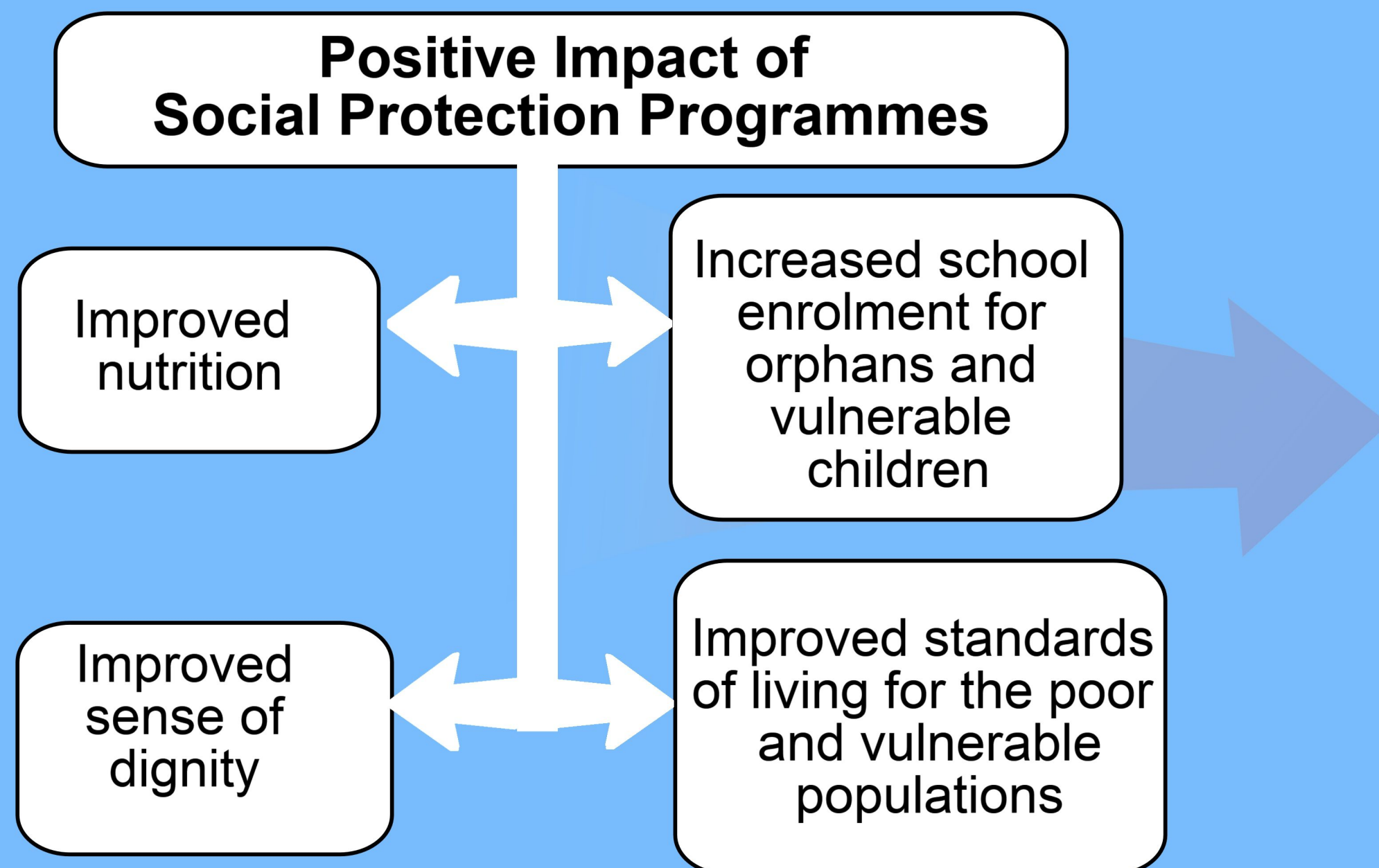
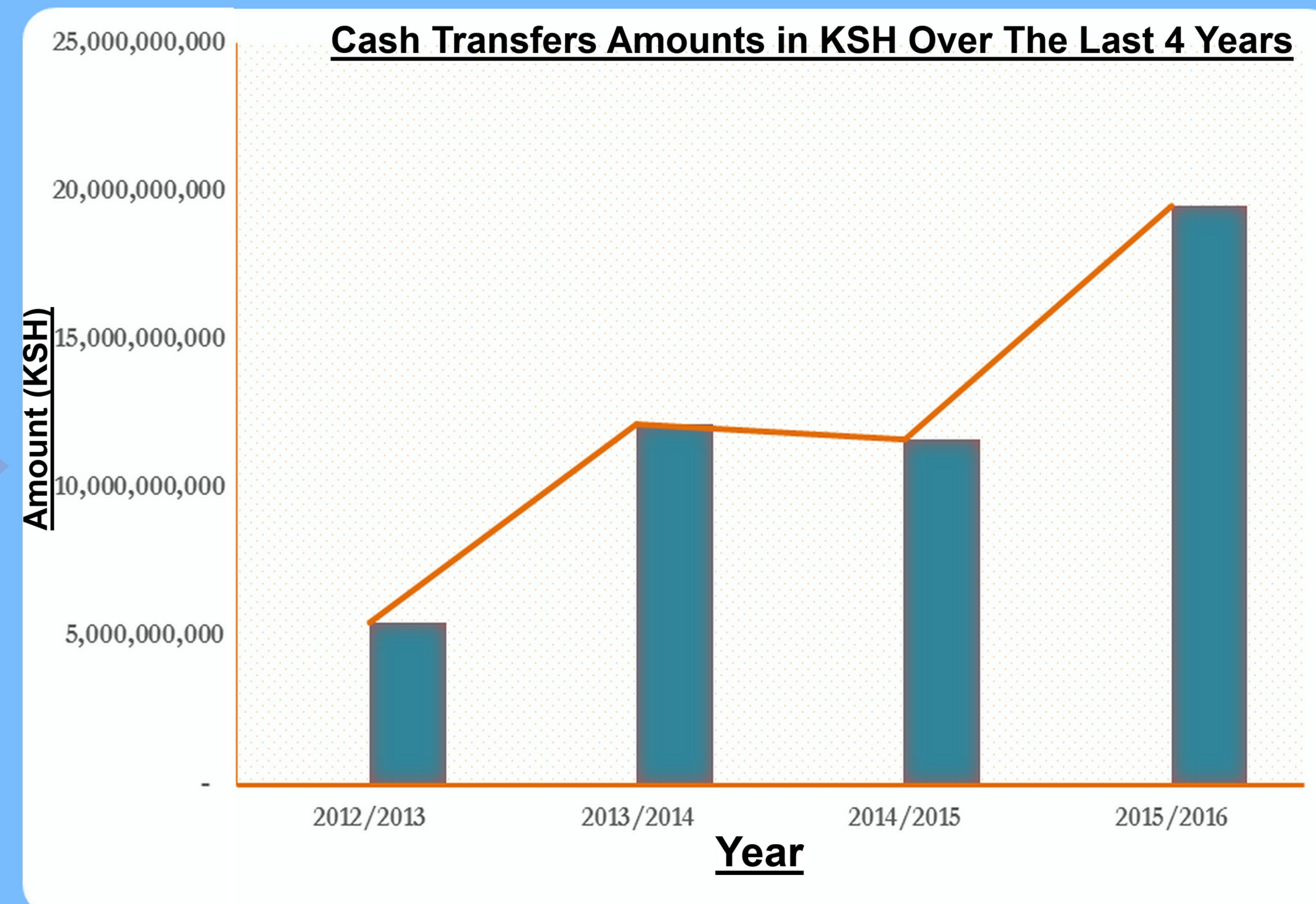
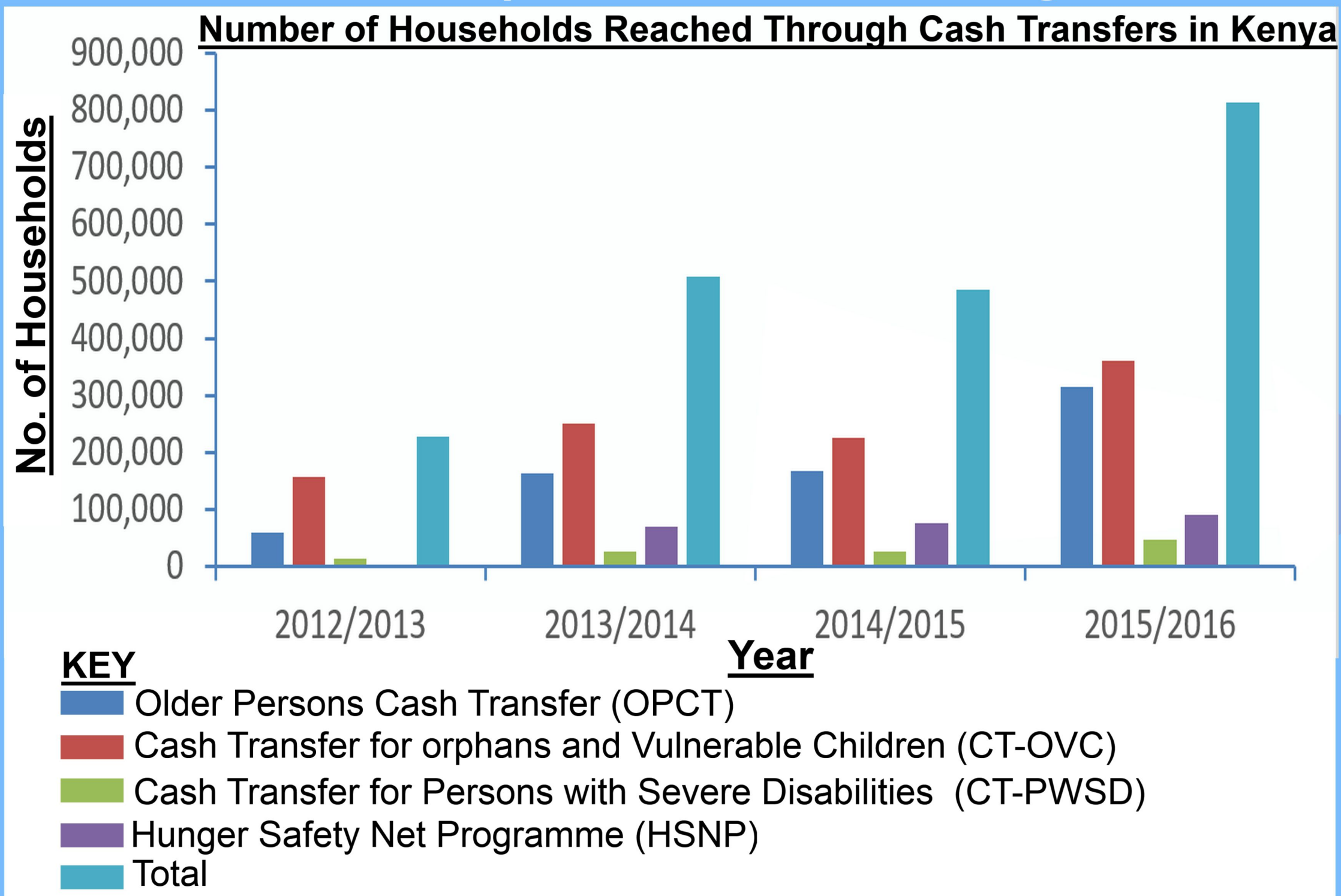


Global Safety Net Coverage of The Extreme Poor



Source: Poverty data are from the World Bank POVCALNET, program number of beneficiaries from Atlas of Social Protection

Utafiti Sera (Research-Policy Community) on Social Protection in Kenya



- ### Research-Policy Recommendations on SP
- Develop a comprehensive legislation on social protection
 - Introducing universal cash transfers to senior citizens and persons with severe disabilities
 - Determine the appropriate exit, graduation and sustainability strategies
 - Explore alternative financing strategies to expand funding sources
 - Ensure coordination in the design and implementation of the programmes

Credits: The AIHD acknowledges the immense contribution of PASGR and INCLUDE for establishing and supporting the implementation of Utafiti Sera on social protection in Kenya